

**stelton**

AUTUMN / WINTER 2025



# Timeless design since 1960

Our Autumn / Winter 2025 collection is a celebration of timeless design crafted by our iconic designers since 1960.

Each item is a continuation of our design heritage, that will continue to be passed on through generations. Thoughtfully created to enhance daily life with beauty and functionality.

Welcome to a collection where timeless design and calm elegance come together to make every moment a little more beautiful.

[www.stelton.com](http://www.stelton.com)



@steltondesign

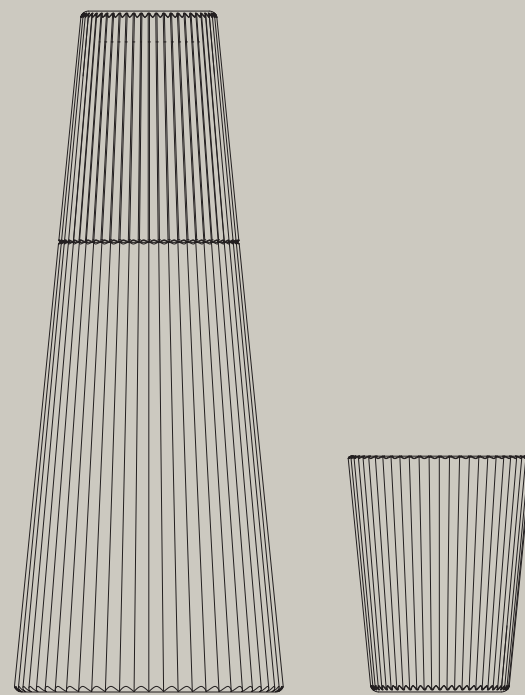


@steltondesign



@steltondesign





PILASTRO BY FRANCIS CAYOUE

The Pilastro series, designed by Francis Cayouette, reflect a deep understanding of everyday life. Inspired by the Art Deco movement, the collection features fluted details that combine classic design with modern versatility.

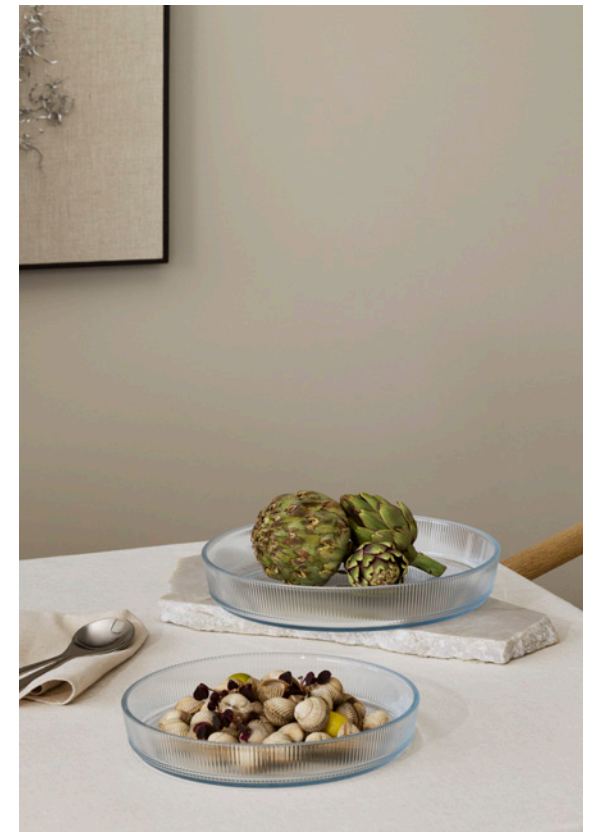


Francis Cayouette is a Canadian designer based in Copenhagen since 1999, where he runs his studio Unit10. Educated in Montreal and Paris, he collaborates with both Scandinavian and international brands to create thoughtful, functional products.



The Pilastro series, designed by Francis Cayouette, reflect a deep understanding of everyday life. Inspired by the Art Deco movement, the collection features fluted details that combine classic design with modern versatility.

# Making everyday life a bit more beautiful



New Pilastro ovenproof dishes in ribbed glass with a minimalist and timeless design. Perfect for baking and serving—straight from oven to table. The heat-resistant glass combines function and aesthetics, adding a refined touch to any table setting.



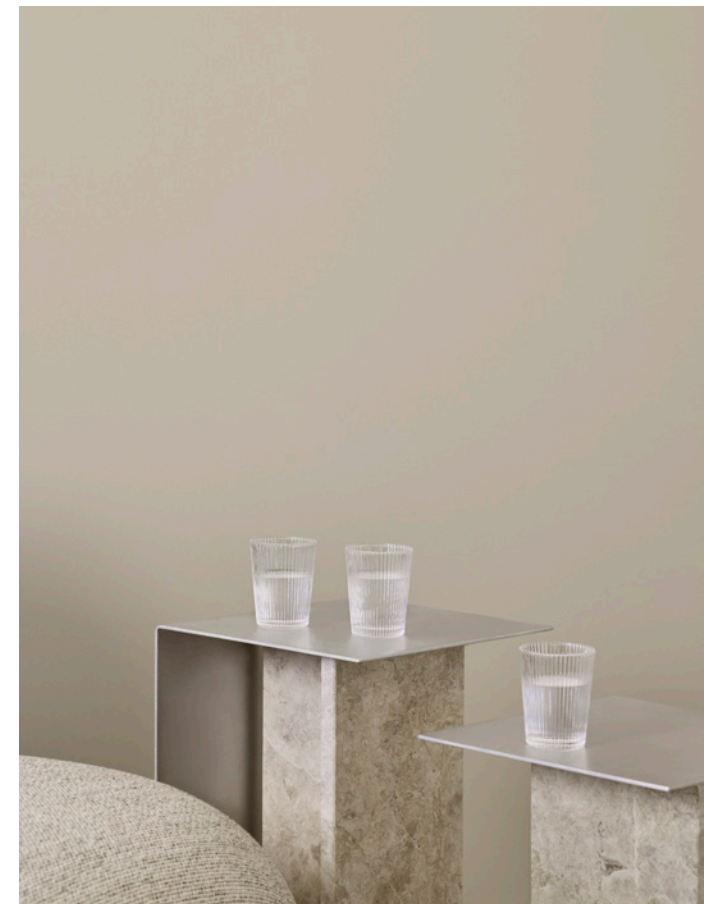
Francis Cayouette's designs masterfully balance form and function—transforming everyday life into something special.



The new elegant and practical storage jar in ribbed glass adds a refined touch to any kitchen. Ideal for spices, nuts, tea, coffee or other dry goods, and the airtight seal preserves both freshness and aroma.

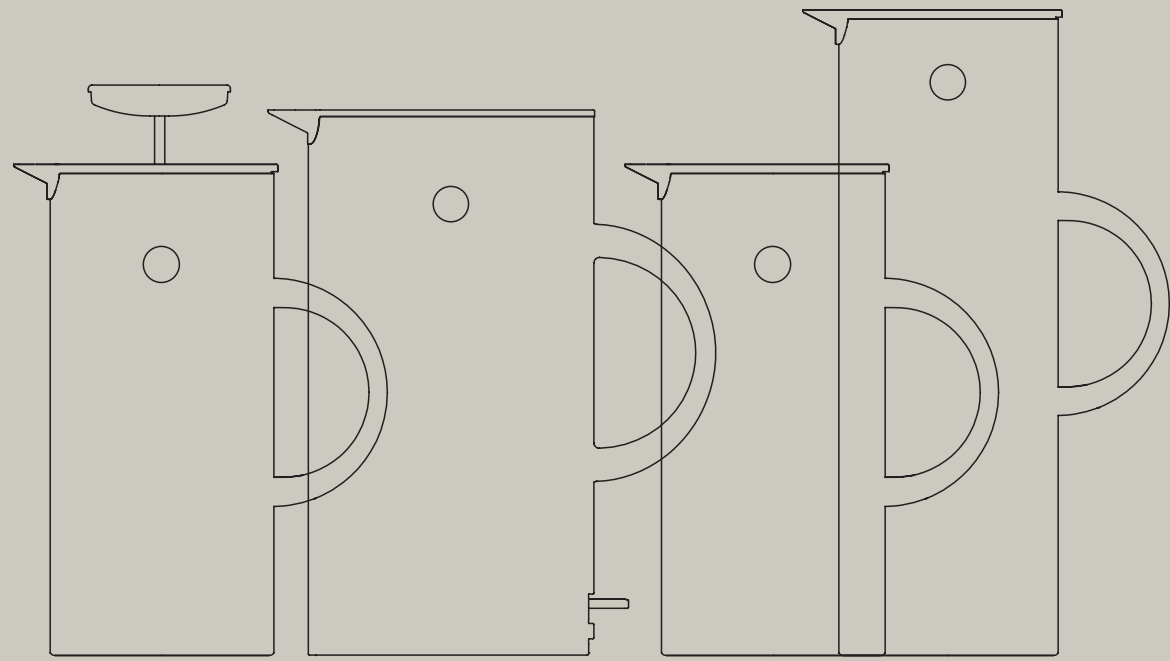


The simple, beautiful glass products in the Pilastro series—drinking glasses in three sizes, long drink glasses, a wine cooler, carafe, cocktail shaker, serving bowls, tapas set, and ovenproof dishes—already adorn many homes. Now, the series is expanding to include wine glasses, storage jars, and two sizes of ovenproof pie dishes.



Despite its elegant appearance, the entire Pilastro series is extremely durable and robust, allowing it to withstand everyday handling and frequent dishwasher use with ease.





EM77 BY ERIK MAGNUSSEN

The EM77 series, designed by Erik Magnussen, reflects a deep understanding of form and function. This versatile collection features Danish design icons—where form pleases the eye and function refines the taste.

# Perfecting form and function



Erik Magnussen was one of Denmark's most celebrated industrial designers, known for his functional, elegant, and forward-thinking creations. Trained as a ceramist, he went on to design everything from furniture and lighting to iconic tableware.

His long-standing collaboration with Stelton resulted in timeless pieces that remain design classics. Magnussen's legacy lives on through award-winning works that continue to shape modern design.



The EM77 series, designed by Erik Magnussen, reflects a deep understanding of form and function. This versatile collection features Danish design icons—where form pleases the eye and function refines the taste.



Pure, smooth  
and refreshing



Experience the benefits of clean,  
soft and better-tasting water with  
the EM77 water filter jug and Stelton  
Magnesium+ water filter.

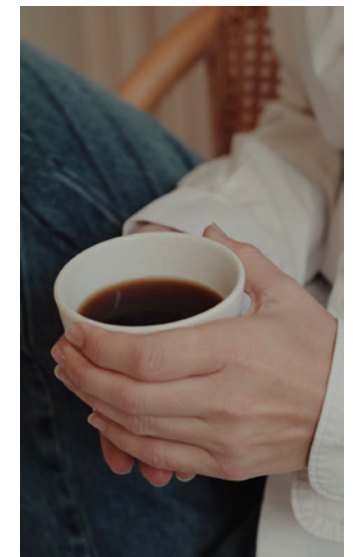
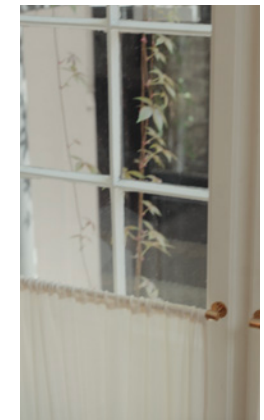


Filtering water protects  
appliances like kettles and  
coffee machines, ensuring  
optimal performance and a  
longer lifespan.





# For the moments that matter



The EM77 water filter jug and Stelton Magnesium+ water filter reduce impurities and enrich the water with magnesium—enhancing the flavor of your water, coffee, tea, and other beverages.



# Designed to last a lifetime



„My way of designing is not an intellectual process. My ideas are borne out of my own needs. I don't want to complicate things, only to make everyday life a little easier.“

- Erik Magnussen, Designer



The EM77 vacuum jug was designed to last a lifetime, as all the components can be replaced if they should break. This extends the service life of the vacuum jug, thereby benefiting the environment.

# Made in Denmark

The EM77 vacuum jug is a renowned design icon. Exhibited in museums globally, this iconic jug, crafted from ABS plastic, has been produced in Denmark since 1977, available in an extensive palette of over 100 colors.

Inspired by the iconic EM77 vacuum jug design, the EM tray and jug with lid epitomize stylish serving in the Stelton EM series. Crafted in Denmark, they seamlessly blend form and function with timeless elegance.





Inspired by materials like cashmere and wool, the AW2025 colors pay tribute to understated Nordic luxury.

As autumn settles in and we begin to spend more time indoors, the home becomes a natural focus—a space for calm, warmth, and thoughtful moments. Stelton's classic EM77 vacuum jugs are introduced in three refined new shades, inspired by soft textiles and honest, tactile materials: Dark Forest, a deep, elegant green reminiscent of the forest at dusk; Heather, a delicate blush tone, warm and powdery like cashmere; and Sand, a soft, natural shade with the soothing warmth of wool. A quiet statement for homes that embrace the season with softness and style.

stelton





# Shades of the season



Dark Forest—a deep, elegant green  
reminiscent of the forest at dusk.



Heather—a delicate blush tone,  
warm and powdery like cashmere.

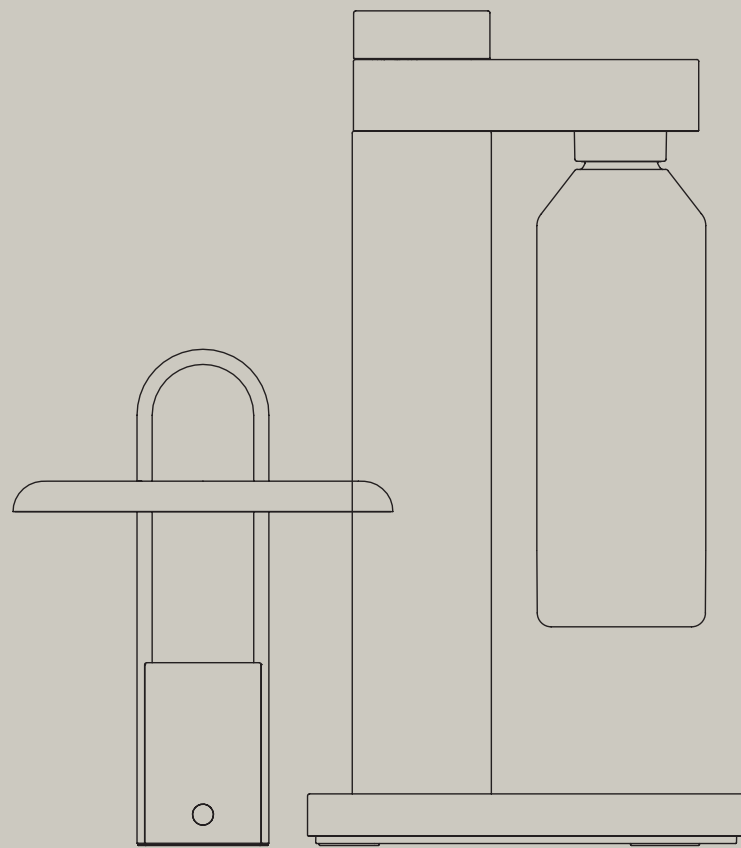


Sand—a soft, natural  
shade with the soothing  
warmth of wool.



Inspired by materials like cashmere and wool, this season's new colors pay tribute to understated Nordic luxury. As autumn settles in and we begin to spend more time indoors, the home becomes a natural focus—a space for calm, warmth, and thoughtful moments. A quiet statement for homes that embrace the season with softness.





DESIGN BY SØREN REFSGAARD

The minimalist design of both the Pier lamp and Brus carbonator that combines form and function are typical examples of designer Søren Refsgaard's desire to cut away all that is superfluous.

# Simplicity at its best



Søren Refsgaard is a Copenhagen-based designer whose work is rooted in the Danish design tradition. Since founding his studio in 2003, he has created lighting, furniture, and home accessories characterized by clean lines and functional clarity.

Refsgaard strives to find the delicate balance between simplicity and character—removing the unnecessary without losing the soul of the design.



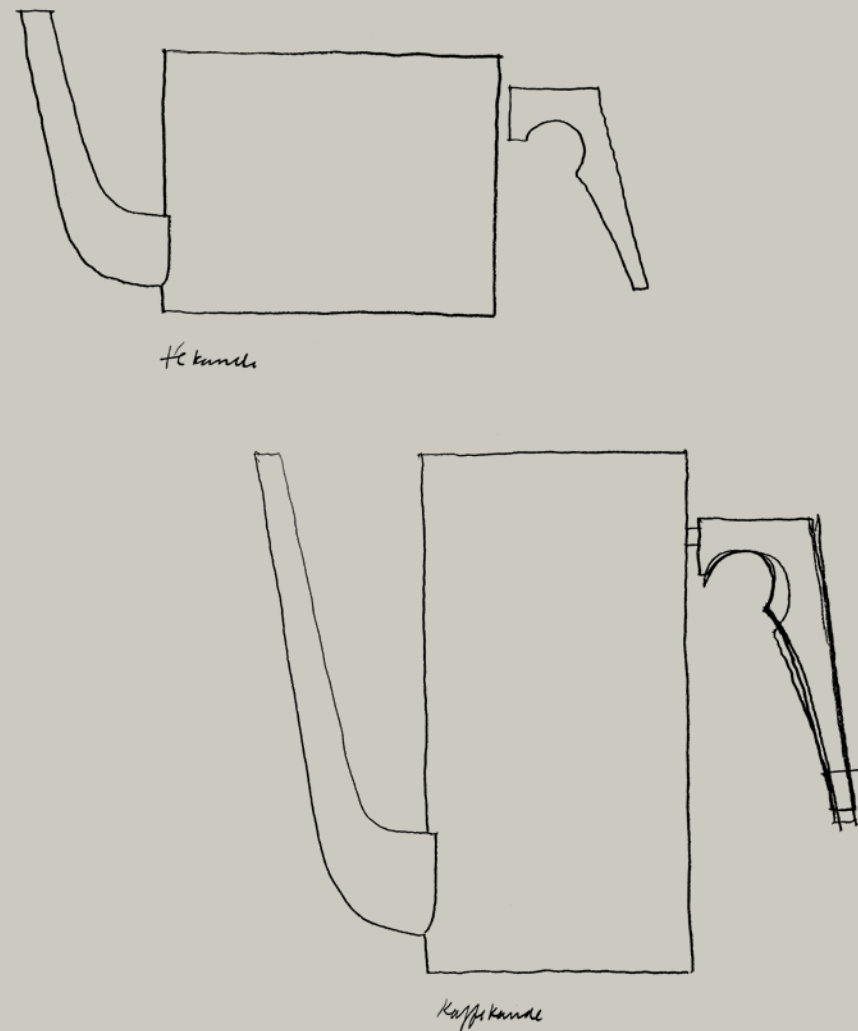
The minimalist design of both the Pier lamp and Brus that combines form and function are typical examples of designer Søren Refsgaard's desire to cut away all that is superfluous.

„I am naturally driven by a desire to create products that are simple in both function and design. For me, there is a fine line between something being simple or banal. This is the balance that I investigate for every product I create. How much can I cut away without the design losing its character or soul?“

- Søren Refsgaard, Designer





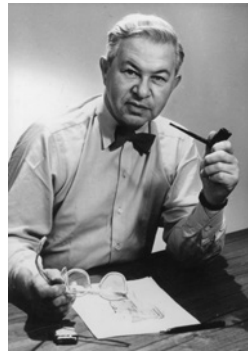


CYLLINDA-LINE BY ARNE JACOBSEN

Arne Jacobsen's vision for Cyllinda-line was that the series should enrich the ordinary consumer with good industrial design. With his design, he realized some of the most important ideas from functionalism—total proportionality between form and function.



# Design icons



Arne Jacobsen is one of the most recognised Danish architects worldwide. Uncompromising in his approach, Jacobsen went beyond architecture to design furniture, lighting and interiors.

Arne Jacobsen played an important role in modernism and Danish design history, and present-day designers are still highly influenced by his works. He had an extraordinary understanding of proportion, which he applied to his designs.



Arne Jacobsen designed the award-winning Cylinda-line series for Stelton in 1967 and it remains the heart of Stelton's design DNA.



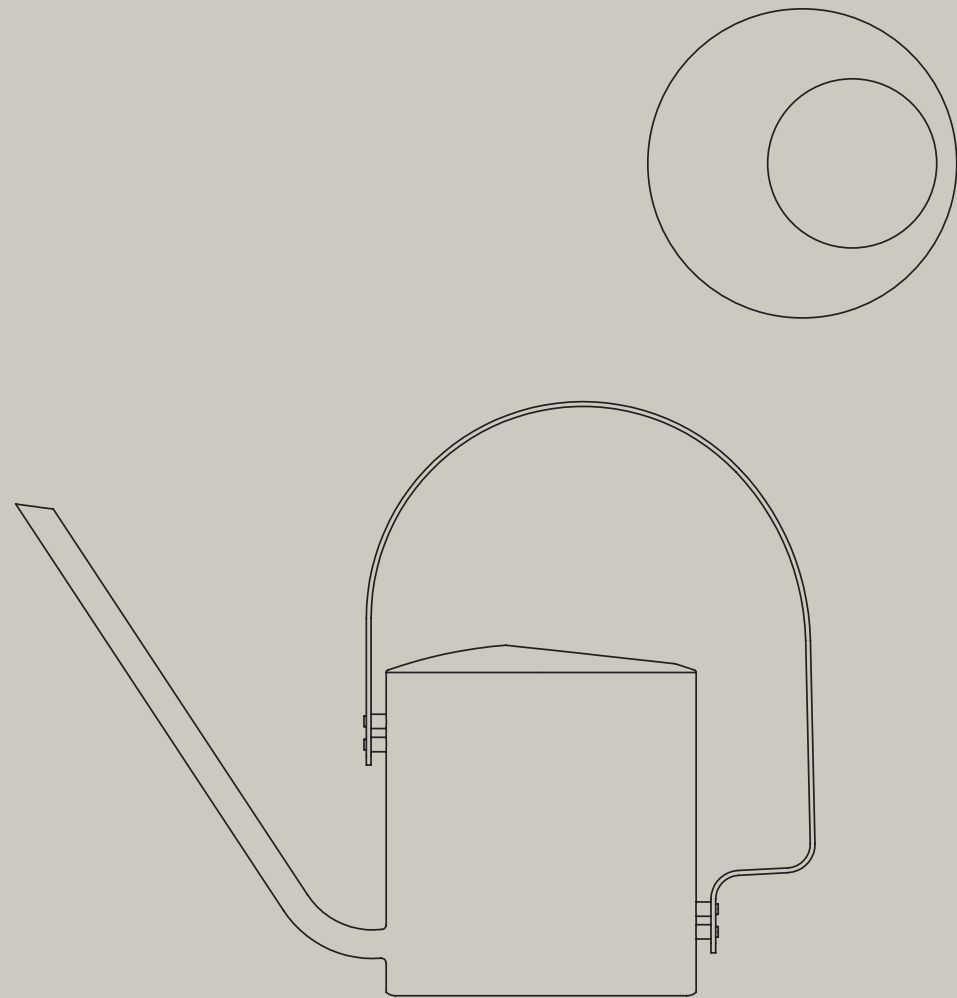
The story behind a design Icon.

When Stelton set out to create a vacuum jug to complement Cylinda-line—Erik Magnussen was entrusted with the task. The result was the EM77: a vacuum jug that echoes the Cylinda-line's signature cylindrical form and minimalist expression, uniting functionality with timeless design.



The minimalist design of Brus that combines form and function speaks to the Scandinavian design tradition and is a typical example of designer Søren Refsgaard's desire to cut away all that is superfluous. The design draws on the cylindrical shapes that are classic to Stelton designs.





ORIGINAL BY PETER HOLMBLAD

The Original series, by Peter Holmblad, stands as a tribute to Stelton's design DNA. Holmblad's vision, shaped through his close collaboration with Arne Jacobsen, marked the beginning of a new era for Stelton.



Combining functionality with aesthetics has been key to Stelton's success and its enduring influence in the design world.



Peter Holmblad played an important role in shaping Stelton as a design brand.

Holmblad designed several iconic products, including the Original series. His vision and collaboration with Arne Jacobsen led to the legendary Cylinda-line—marking a new era for Stelton.



The Original flower watering can is part of the Original-series which is a central part of Stelton's design DNA. With its elegant idiom, functionality meets aesthetics and in addition to its original function: keeping flowers and green plants fresh, it is also a decorative sculpture when not in use.

# Designed to last



The EM ship's LED lamp designed by Erik Magnussen is crafted in satin-polished stainless steel, and its minimalist and cylindrical form is preserved to ensure a timeless aesthetic. The classic EM Ship's lamp is still available with a traditional burner.



# Making every moment special



Sebastian Holmbäck and Ulrik Nordentoft met at the Danish Design School, where they both trained. Almost 10 years after their graduation they established the HolmbäckNordentoft studio. Their common ground, and the basis for all their work, is aesthetics. The studio works in a wide range of design areas, including interior design, furniture, lighting, industrial design and product design, which is their primary focus.



The Emma series, with its simple and elegant lines, is a beautiful addition to any kitchen counter or table. This combination of stainless steel with details of moulded beech wood fits perfectly into a modern home. In the Emma collection, you will find everything you need to set an inviting table from cups and plates to vacuum jugs, electric kettles and French press.



# Timeless elegance



The Amphora vacuum jug in stainless steel is dishwasher safe and will keep your coffee or tea hot for hours. The vacuum jug is named after the ancient Greek earthenware pots which were used to store and transport oil and wine. The Danish designer, Sebastian Holmbäck has drawn inspiration from the amphora's round body and distinctive shoulders in a design that also reaches far into the future.

The Ro Qi wireless charger is a beautiful combination of functionality and aesthetics. Crafted from certified oak, the charger is not only a practical tool but a simple and elegant solution for the modern home.



With space to charge two devices wirelessly and two more via cable, the wireless charger ensures that all the devices can be charged easily and efficiently. Simply place your Qi-compatible device on the charging pad, and the battery will be charged without the need for cables.



# An eco-conscious lifestyle

Stelton offers high quality vacuum insulated cups and bottles in 90% recycled stainless steel. Perfect for those who aspire to maintain an elegant and environmentally friendly lifestyle while on the go.



To Go Click 0.2 l



3 hours warm



6 hours cold



90% recycled stainless steel

To Go Click 0.4 l



4.5 hours warm



9 hours cold



90% recycled stainless steel

Keep Cool 0.6 l



16 hours warm



32 hours cold



90% recycled stainless steel





Together with our talented and carefully selected designers, our ambition is to create timeless and functional designs that make everyday life a bit more beautiful.



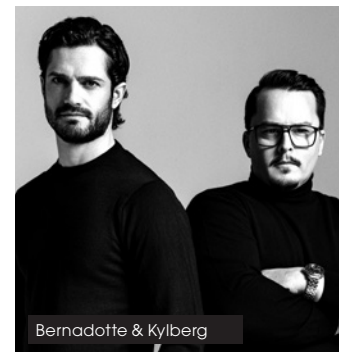
Erik Magnussen



Arne Jacobsen



Maria Berntsen



Bernadotte & Kylberg



Halskov & Dalsgaard



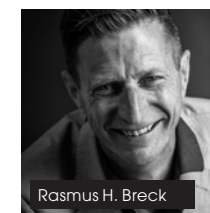
Søren Refsgaard



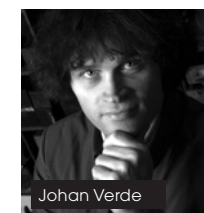
Michael Ring



Jehs+Laub



Rasmus H. Breck



Johan Verde



Peter Holmblad



Tias Eckhoff



Francis Cayouette / Unit 10



Daniel Debiasi & Federico Sandri



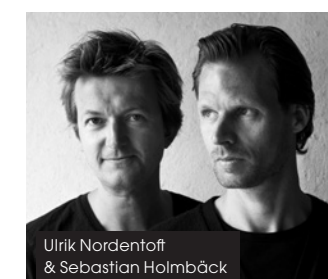
Norman Foster



Kazushige Miyake



Klaus Rath






Ulrik Nordentoft  
& Sebastian Holmback



Böttcher & Kayser

# To Go Sip

-  3 hours warm
-  6 hours cold
-  90% recycled stainless steel



Cylinda-line



Arne Jacobsen coffee pot  
1.5 l  
Design: Arne Jacobsen  
art. no. 01-2



Arne Jacobsen French press  
1 l  
Design: Arne Jacobsen  
art. no. 01-3



Arne Jacobsen tea pot  
1.25 l  
Design: Arne Jacobsen  
art. no. 04-2



Arne Jacobsen creamer  
0.15 l  
Design: Arne Jacobsen  
art. no. 06-2



Arne Jacobsen sugar bowl  
Design: Arne Jacobsen  
art. no. 06-3



Arne Jacobsen toast rack  
Design: Arne Jacobsen  
art. no. 013-1



Arne Jacobsen salt & pepper set  
6.5 cm  
Design: Arne Jacobsen  
art. no. 010-1



Arne Jacobsen salt mill  
Design: Arne Jacobsen  
art. no. 017-3



Arne Jacobsen pepper mill  
Design: Arne Jacobsen  
art. no. 017-1



Arne Jacobsen salad servers  
31 cm  
Design: Arne Jacobsen  
art. no. 023-1



Arne Jacobsen jug with icelip  
2 l  
Design: Arne Jacobsen  
art. no. 03-3



Arne Jacobsen serving tray  
Design: Arne Jacobsen  
art. no. 014-2



Arne Jacobsen champagne cooler  
Design: Arne Jacobsen  
art. no. 05-5



Arne Jacobsen cocktail shaker  
0.75 l  
Design: Arne Jacobsen  
art. no. 016-1



Arne Jacobsen martini mixer with spoon  
1 l  
Design: Arne Jacobsen  
art. no. 020-1



Arne Jacobsen ice bucket  
1 l  
Design: Arne Jacobsen  
art. no. 05-1



Arne Jacobsen ice bucket  
2.5 l  
Design: Arne Jacobsen  
art. no. 05-2



Arne Jacobsen ice tongs  
Design: Arne Jacobsen  
art. no. 015-1



Arne Jacobsen coaster 6 pcs.  
Design: Arne Jacobsen  
art. no. 019-1



Arne Jacobsen revolving ashtray  
small  
Design: Arne Jacobsen  
S art. no. 09-1



Arne Jacobsen revolving ashtray  
large  
Design: Arne Jacobsen  
L art. no. 09-2

Classic



Brus carbonator  
steel  
Design: Søren Refsgaard  
art. no. 2100



Brus carbonator  
black metallic  
Design: Søren Refsgaard  
art. no. 2100-1



Brus carbonator  
brown metallic  
Design: Søren Refsgaard  
art. no. 2100-2



Brus carbonator  
brushed brass  
Design: Søren Refsgaard  
art. no. 2100-3



Brus carbonator  
soft sand  
Design: Søren Refsgaard  
art. no. 2100-4

NEW



Brus carbonator  
soft dark forest  
Design: Søren Refsgaard  
art. no. 2100-5

NEW



Brus wall mount carbonator  
steel  
Design: Søren Refsgaard  
art. no. 2102



Brus wall mount carbonator  
black metallic  
Design: Søren Refsgaard  
art. no. 2102-1



Brus carbonating bottle  
1.15 l.  
Design: Søren Refsgaard  
art. no. 2101



Brus carbonating bottle  
0.9 l. - steel  
Design: Søren Refsgaard  
art. no. 2103



Original bottle opener  
Design: Peter Holmblad  
art. no. 521



Original cork screw  
Design: Peter Holmblad  
art. no. 522



Original cheese slicer  
Design: Peter Holmblad  
art. no. 527



Original napkin holder  
Design: Peter Holmblad  
art. no. 486



Original flower watering can  
Design: Peter Holmblad  
art. no. 100-15



EM nut & lobster cracker  
Design: Erik Magnussen  
art. no. 465



EM cake knife/spade  
Design: Erik Magnussen  
art. no. 460



EM lasagne spade  
Design: Erik Magnussen  
art. no. 463



Stelton reusable straw  
4 pcs. - steel  
Design: Stelton  
art. no. 536



## Classic



Pilastro long drink glass  
4 pcs. - 0.3 l  
Design: Francis Cayouette  
art. no. x-509



Pilastro drinking glass  
4 pcs. - 0.35 l  
Design: Francis Cayouette  
art. no. x-505



Pilastro drinking glass  
6 pcs. - 0.24 l  
Design: Francis Cayouette  
art. no. x-502



Pilastro drinking glass  
6 pcs. - 0.13 l  
Design: Francis Cayouette  
art. no. x-521



NEW

Pilastro wine glass  
4 pcs. - 0.18 l  
Design: Francis Cayouette  
art. no. x-520



Pilastro tapas set  
Design: Francis Cayouette  
art. no. x-512



Pilastro serving bowl  
Ø 15 cm  
Design: Francis Cayouette  
art. no. x-505



Pilastro serving bowl  
Ø 23 cm  
Design: Francis Cayouette  
art. no. x-506



Pilastro serving bowl  
Ø 21 cm  
Design: Francis Cayouette  
art. no. x-513



Pilastro ovenproof dish  
L 19.7 cm  
Design: Francis Cayouette  
art. no. x-517



Pilastro ovenproof dish  
L 33.1 cm  
Design: Francis Cayouette  
art. no. x-518



Pilastro ovenproof dish  
L 40.8 cm  
Design: Francis Cayouette  
art. no. x-519



NEW

Pilastro ovenproof Pie dish  
Ø 24 cm  
Design: Francis Cayouette  
art. no. x-527



NEW

Pilastro ovenproof Pie dish  
Ø 28 cm  
Design: Francis Cayouette  
art. no. x-528



Pilastro carafe with 0.13 l glass  
Design: Francis Cayouette  
art. no. x-507



Pilastro cocktail shaker  
Design: Francis Cayouette  
art. no. x-510



Pilastro wine cooler  
Design: Francis Cayouette  
art. no. x-504



NEW

Pilastro storage jar  
0.6 l  
Design: Francis Cayouette  
art. no. x-525



NEW

Pilastro storage jar  
1.3 l  
Design: Francis Cayouette  
art. no. x-526



Classic



EM77 vacuum jug  
steel  
Design: Erik Magnussen  
1 l. – art. no. 900  
0.5 l. – art. no. 915



EM77 electric kettle 1.5 l.  
steel  
Design: Erik Magnussen  
art. no. 891



EM77 creamer  
steel  
Design: Erik Magnussen  
art. no. 1000



EM77 vacuum jug 1 l.  
brushed brass  
Design: Erik Magnussen  
art. no. 995



EM77 electric kettle 1.5 l.  
brushed brass  
Design: Erik Magnussen  
art. no. 891-1



EM77 vacuum jug  
black  
Design: Erik Magnussen  
1 l. – art. no. 930  
0.5 l. – art. no. 935



EM77 electric kettle  
black  
Design: Erik Magnussen  
1.5 l. – art. no. 890  
0.5 l. – art. no. 892



EM77 French press 1 l.  
black  
Design: Erik Magnussen  
art. no. 812



Dripper for vacuum jug  
Design: Stelton  
art. no. 1020



Tea strainer for EM77  
Design: Stelton  
art. no. 999



EM77 vacuum jug  
white  
Design: Erik Magnussen  
1 l. – art. no. 960  
0.5 l. – art. no. 965



EM77 electric kettle 1.5 l.  
white  
Design: Erik Magnussen  
art. no. 890-1



EM77 French press 1 l.  
white  
Design: Erik Magnussen  
art. no. 811



EM77 vacuum jug 1 l.  
light grey  
Design: Erik Magnussen  
art. no. 918



EM77 electric kettle 1.5 l.  
light grey  
Design: Erik Magnussen  
art. no. 890-2



EM77 vacuum jug 1 l.  
heather  
Design: Erik Magnussen  
art. no. 995-9\*



EM77 electric kettle 1.5 l.  
heather  
Design: Erik Magnussen  
art. no. 890-7\*



EM77 vacuum jug 1 l.  
dark forest  
Design: Erik Magnussen  
art. no. 974\*



EM77 electric kettle 1.5 l.  
dark forest  
Design: Erik Magnussen  
art. no. 890-6\*



EM77 vacuum jug 1 l.  
art. no. 995-3 (soft black) / 991 (granite grey) / 920 (red) / 919 (dusty green) / 985 (cloud) / 997 (lavender) / 1800 (sand) / 995-10\* (laevis) / 995-11\* (wheat)  
Design: Erik Magnussen

\*limited

Classic



EM77 jug with lid  
1.5 l. – smoke  
Design: Erik Magnussen  
art. no. 1310-8



EM77 jug with lid  
1.5 l. – dusty green  
Design: Erik Magnussen  
art. no. 1310-7



EM77 jug with lid  
1.5 l. – blue  
Design: Erik Magnussen  
art. no. 1310



EM77 jug with lid  
1.5 l. – saffron  
Design: Erik Magnussen  
art. no. 1310-6\*



EM77 water filter jug  
2 l.  
Design: Erik Magnussen  
smoke – art. no. 1310-10  
blue – art. no. 1310-13



Magnesium+ Water filter  
3 pcs.  
Design: Stelton  
art. no. 1334



EM serving tray  
Ø 40 – black  
Design: Erik Magnussen  
art. no. 1309



EM serving tray  
Ø 40 – dusty green  
Design: Erik Magnussen  
art. no. 1309-1



EM serving tray  
Ø 40 – cloud  
Design: Erik Magnussen  
art. no. 1309-3



Bread bag  
large – black  
Design: Klaus Rath  
art. no. 1320



Bread bag  
large – heather  
Design: Klaus Rath  
art. no. 1320-1\*



Bread bag  
large – black/sand  
Design: Klaus Rath  
art. no. 1322



Bread bag  
large – sand/white  
Design: Klaus Rath  
art. no. 1323



Stelton mug  
2 pcs. – light grey  
Design: Søren Refsgaard  
art. no. 1142-1



Stelton mug  
2 pcs. – dusty green  
Design: Søren Refsgaard  
art. no. 1142-2



Stelton mug  
2 pcs. – lavender  
Design: Søren Refsgaard  
art. no. 1142



Scoop tea canister  
small 0.3 l.  
Design: Søren Refsgaard  
art. no. 511



Classic



EM oil lamp  
8.5 x 18 cm – clear glass shade  
Design: Erik Magnussen  
art. no. 1005



EM ship's lamp  
15 x 34 cm  
Design: Erik Magnussen  
art. no. 1004



EM ship's lamp  
27 x 43 cm  
Design: Erik Magnussen  
art. no. 1001



EM LED ship's lamp  
27 x 43 cm  
Design: Erik Magnussen  
art. no. 1001-1



LED-light for EM ship's lamp  
Design: Erik Magnussen  
art. no. 1001-11



Hurricane – black  
Design: Maria Berntsen  
H 24.5 cm – art. no. 495  
H 28.5 cm – art. no. 496



Lucie hurricane  
Design: Francis Cayouette  
amber – art. no. 497-1  
azure – art. no. 497-2



Vegetable candle for hurricane  
RSPO certified palm oil  
2 pcs. – art. no. R-96



Stelton Time wall clock  
Ø 30 cm – black  
Design: Jehs+Laub  
art. no. 851

Nordic



Theo teapot – sand  
1.25 l  
Design: Francis Cayouette  
art. no. x-630-1



Theo teapot warmer – sand  
Design: Francis Cayouette  
art. no. x-631-1



Theo coffee maker – sand  
0.6 l  
Design: Francis Cayouette  
art. no. x-634-1



Theo cup with coaster – sand  
Design: Francis Cayouette  
0.2 l – art. no. x-632-1  
0.25 l – art. no. x-641-1



Theo teapot – black  
1.25 l  
Design: Francis Cayouette  
art. no. x-630



Theo teapot warmer – black  
Design: Francis Cayouette  
art. no. x-631



Theo coffee maker – black  
0.6 l  
Design: Francis Cayouette  
art. no. x-634



Theo cup with coaster – black  
Design: Francis Cayouette  
0.2 l – art. no. x-632  
0.25 l – art. no. x-641



Theo serving tray bamboo  
Design: Francis Cayouette  
art. no. x-643



Theo French press – black  
0.8 l  
Design: Francis Cayouette  
art. no. x-636



Theo milk jug and sugar bowl  
black  
Design: Francis Cayouette  
milk jug 0.4 l. – art. no. x-638  
sugar bowl – art. no. x-637



Theo mug 2 pcs. – black  
Design: Francis Cayouette  
art. no. x-639



Theo lunch plate 2 pcs. – black  
Design: Francis Cayouette  
art. no. x-640



Collar espresso maker 0.25 l  
Design: Debiassi & Sandri  
art. no. 420



Collar coffee grinder  
Design: Debiassi & Sandri  
423-1 (steel)



Collar vacuum bottle stopper  
Design: Debiassi & Sandri  
art. no. 419



Nohr gooseneck kettle  
black metallic  
Design: Søren Refsgaard  
art. nr. 610



Nohr glass server  
black metallic  
Design: Søren Refsgaard  
art. nr. 611



Nohr slow brew dripper with filter  
black metallic  
Design: Søren Refsgaard  
art. nr. 612



Nohr filter for cold brew  
black metallic  
Design: Søren Refsgaard  
art. nr. 613



Nordic



Ora vase  
neo mint / midnight blue  
H 21.6 cm  
Design: Debiassi & Sandri  
art. no. 109



Ora vase  
dusty blue / midnight blue  
H 17.9 cm  
Design: Debiassi & Sandri  
art. no. 108



Ora bowl  
neo mint / midnight blue  
Ø 30 cm  
Design: Debiassi & Sandri  
art. no. 102



Ora bowl  
dusty blue / midnight blue  
Ø 22 cm  
Design: Debiassi & Sandri  
art. no. 101



Ora bowl  
dark forest / midnight blue  
Ø 15 cm  
Design: Debiassi & Sandri  
art. no. 100



Ora vase  
dark powder / powder  
H 21.6 cm  
Design: Debiassi & Sandri  
art. no. 109-1



Ora vase  
dusty rose / powder  
H 17.9 cm  
Design: Debiassi & Sandri  
art. no. 108-1



Ora bowl  
dark powder / powder  
Ø 30 cm  
Design: Debiassi & Sandri  
art. no. 102-1



Ora bowl  
dusty rose / powder  
Ø 22 cm  
Design: Debiassi & Sandri  
art. no. 101-1



Ora bowl  
warm maroon / powder  
Ø 15 cm  
Design: Debiassi & Sandri  
art. no. 100-1



Ora  
candleholder / tealightholder  
steel  
Design: Debiassi & Sandri  
H 6.5 cm – art. no. 103  
H 8 cm – art. no. 104



Ora  
candleholder / tealightholder  
beech wood  
Design: Debiassi & Sandri  
H 6.5 cm – art. no. 103-1  
H 8 cm – art. no. 104-1



Ora tealightholder 2 pcs.  
smoke  
Design: Debiassi & Sandri  
art. no. 107



Ora three-armed candleholder  
black  
Design: Debiassi & Sandri  
art. no. 110



Hoop hurricane  
black  
Design: UNIT 10  
art. no. 618



Vegetable candle for hurricane  
RSPO certified palm oil  
2 pcs. – art. no. R-96

Nordic



Pier portable LED lamp  
black  
Design: Søren Refsgaard  
25 cm – art. nr. 614  
33.5 cm – art. nr. 616



Pier portable LED lamp  
sand  
Design: Søren Refsgaard  
25 cm – art. nr. 614-1  
33.5 cm – art. nr. 616-1



Bloom watering can  
2 l. – pine  
Design: Böttcher & Kayser  
art. nr. 345



Okiru alarm clock  
Design: Kazushige Miyake  
black – art. no. 401



Fjord shower wiper  
black  
Design: Debiassi & Sandri  
art. nr. 116



Fjord mirror  
black  
Design: Debiassi & Sandri  
art. nr. 117



Fjord  
black  
Design: Debiassi & Sandri  
toilet brush – art. nr. 118  
toilet brush head – art. nr. 119



Fjord  
black  
Design: Debiassi & Sandri  
dispenser 0.3 l. – art. nr. 111  
toothbrush holder – art. nr. 113  
tray – art. nr. 115



Fjord soap dish Ø 11 cm  
black  
Design: Debiassi & Sandri  
art. nr. 112



Danish Modern 2.0



Emma electric kettle  
1.2 l. – steel  
Design: HolmbäckNordentoft  
art. no. x-210-10



Emma vacuum jug coffee  
1 l. – steel  
Design: HolmbäckNordentoft  
art. no. x-200-10



Emma vacuum jug tea  
1 l. – steel  
Design: HolmbäckNordentoft  
art. no. x-201-10



Emma French press  
1 l. – steel  
Design: HolmbäckNordentoft  
art. no. x-239-10



Emma electric kettle  
1.2 l. – soft sand  
Design: HolmbäckNordentoft  
art. no. x-210-9



Emma vacuum jug coffee  
1 l. – soft sand  
Design: HolmbäckNordentoft  
art. no. x-200-9



Emma vacuum jug tea  
1 l. – soft sand  
Design: HolmbäckNordentoft  
art. no. x-201-9



Emma French press  
1 l. – soft sand  
Design: HolmbäckNordentoft  
art. no. x-239



Emma electric kettle  
1.2 l. – grey  
Design: HolmbäckNordentoft  
art. no. x-210-1



Emma vacuum jug coffee  
1 l. – grey  
Design: HolmbäckNordentoft  
art. no. x-200-1



Emma vacuum jug tea  
1 l. – grey  
Design: HolmbäckNordentoft  
art. no. x-201-1



Emma electric kettle  
1.2 l. – blue  
Design: HolmbäckNordentoft  
art. no. x-210



Emma vacuum jug coffee  
1 l. – blue  
Design: HolmbäckNordentoft  
art. no. x-200



Emma vacuum jug tea  
1 l. – blue  
Design: HolmbäckNordentoft  
art. no. x-201



Emma electric kettle  
1.2 l. – soft  
Design: HolmbäckNordentoft  
art. no. x-210-22



Emma electric kettle  
1.2 l. – black  
Design: HolmbäckNordentoft  
art. no. x-210-2



Emma vacuum jug coffee  
1 l. – black  
Design: HolmbäckNordentoft  
art. no. x-200-2



Emma vacuum jug tea  
1 l. – black  
Design: HolmbäckNordentoft  
art. no. x-201-2



Emma electric kettle  
1.2 l. – soft dark blue  
Design: HolmbäckNordentoft  
art. no. x-210-7

Danish Modern 2.0



Emma cup 2 pcs.  
0.15 l. – grey  
Design: HolmbäckNordentoft  
art. no. x-233



Emma cup 2 pcs.  
0.22 l. – grey  
Design: HolmbäckNordentoft  
art. no. x-234



Emma milk jug  
0.3 l. – grey  
Design: HolmbäckNordentoft  
art. no. x-235



Emma bowl 2 pcs.  
Ø 13.5 cm – grey  
Design: HolmbäckNordentoft  
art. no. x-236



Emma plate 2 pcs.  
Ø 19 cm – grey  
Design: HolmbäckNordentoft  
art. no. x-237



Emma plate 2 pcs.  
Ø 24 cm – grey  
Design: HolmbäckNordentoft  
art. no. x-238



Emma cup 2 pcs.  
0.15 l. – rose  
Design: HolmbäckNordentoft  
art. no. x-233-1



Emma cup 2 pcs.  
0.22 l. – rose  
Design: HolmbäckNordentoft  
art. no. x-234-1



Emma milk jug  
0.3 l. – rose  
Design: HolmbäckNordentoft  
art. no. x-235-2



Emma bowl 2 pcs.  
Ø 13.5 cm – rose  
Design: HolmbäckNordentoft  
art. no. x-236-1



Emma plate 2 pcs.  
Ø 19 cm – rose  
Design: HolmbäckNordentoft  
art. no. x-237-1



Emma plate 2 pcs.  
Ø 24 cm – rose  
Design: HolmbäckNordentoft  
art. no. x-238-1



Emma bread basket  
grey  
Design: HolmbäckNordentoft  
art. no. x-228



Emma kitchen roll holder  
grey  
Design: HolmbäckNordentoft  
art. no. x-227



Emma cup 2 pcs.  
blue  
Design: HolmbäckNordentoft  
art. no. x-208



Emma saucer 2 pcs.  
blue  
Design: HolmbäckNordentoft  
art. no. x-212



Emma plate 2 pcs.  
Ø 18 cm – blue  
Design: HolmbäckNordentoft  
art. no. x-209



Emma plate 2 pcs.  
Ø 22 cm – grey  
Design: HolmbäckNordentoft  
art. no. x-219-1



Danish Modern 2.0



Amphora electric kettle  
1.2 l. – black  
Design: Sebastian Holmbäck  
art. no. 223-1 (EU)



Amphora electric kettle  
1.2 l. – soft peach  
Design: Sebastian Holmbäck  
art. no. 223-2 (EU)



Amphora vacuum jug coffee  
1 l. – soft black  
Design: Sebastian Holmbäck  
art. no. 221-1



Amphora vacuum jug coffee  
1 l. – soft peach  
Design: Sebastian Holmbäck  
art. no. 221-2



Amphora vacuum jug coffee  
1 l. – soft white  
Design: Sebastian Holmbäck  
art. no. 221



Amphora vacuum jug  
1.2 l. – steel  
Design: Sebastian Holmbäck  
art. no. 228



Amphora vacuum jug tea  
1 l. – soft black  
Design: Sebastian Holmbäck  
art. no. 222-1



Amphora vacuum jug tea  
1 l. – soft peach  
Design: Sebastian Holmbäck  
art. no. 222-2



Amphora vacuum jug tea  
1 l. – soft white  
Design: Sebastian Holmbäck  
art. no. 222



Solis oil lamp  
Design: Søren Refsgaard  
soft black – art. no. 415  
brass – art. no. 415-1



Vegetable candle for Solis  
RSPO certified palm oil  
2 pcs. – art. no. R-96



Ro Qi wireless charger  
Design: Niels Kjeldsen  
art. no. 399

Foster



Foster dish  
Ø 46 cm – steel – golden  
Design: Norman Foster  
art. no. 710



Foster carafe with stopper  
1 l. – steel – golden  
Design: Norman Foster  
art. no. 720



Foster vacuum jug  
1 l. – steel  
Design: Norman Foster  
art. no. 760



Foster French press  
vacuum jug  
1 l. – steel  
Design: Norman Foster  
art. no. 770



Foster press tea maker  
vacuum jug  
1 l. – steel  
Design: Norman Foster  
art. no. 780



Foster sugar bowl  
porcelain  
Design: Norman Foster  
art. no. 791



Foster tumbler  
0.2 l. – glass  
Design: Norman Foster  
art. no. 731



Foster salt mill  
light grey  
Design: Norman Foster  
art. no. 725-1



Take away serving tray  
Design: Klaus Rath  
art. no. x-8



Embrace bread tray  
black  
Design: Halskov & Dalsgaard  
art. no. x-28-3

Explore



Norstaal



Norstaal



Maya cutlery  
Design: Tias Eckhoff  
Set 24 pcs. – art. no. C-2-24  
Dinner fork – art. no. 13202  
Dinner spoon – art. no. 13102  
Dinner knife – art. no. 30502  
Tea spoon – art. no. 14502  
Coffee spoon – art. no. 11302  
Dessert spoon – art. no. 11102  
Dessert fork – 11202



Maya 2000 cutlery  
Design: Tias Eckhoff  
Set 24 pcs. – art. no. C-18-24  
Dinner fork – art. no. 13222  
Dinner spoon – art. no. 13122  
Dinner knife – art. no. 30522



Maya 2000 steak knife  
4 pcs.  
Design: Tias Eckhoff  
art. no. 30523



Maya salad- & serving set  
Design: Tias Eckhoff  
art. no. 18902



Maya serving set 2 pcs.  
Design: Tias Eckhoff  
art. no. 12102



Aztec cutlery  
Design: Don Wallance  
Dinner spoon – art. no. 13108  
Coffe-/tea spoon – art. no. 11308



Capelano cutlery  
Design: Johan Verde  
Dinner knife – art. no. 30560  
Dinner fork – art. no. 13260  
Dinner spoon – art. no. 13160  
Coffe-/tea spoon – art. no. 14560  
Dessert spoon – art. no. 11160  
Dessert fork – art. no. 11260



EM cutlery  
Design: Erik Magnussen  
Dinner fork – art. no. 541  
Dinner knife – art. no. 542  
Dinner spoon – art. no. 543  
Dessert fork – art. no. 544  
Coffee spoon – art. no. 547



Magnum cutlery  
Design: Don Wallance  
Dinner spoon – art. no. 13109  
Coffe-/tea spoon – art. no. 14509  
Dessert fork – art. no. 11209



Una cutlery  
Design: Tias Eckhoff  
Dinner spoon – art. no. 13107  
Coffe-/tea spoon – art. no. 11307



Chaco cutlery  
Design: Tias Eckhoff  
Set 24 pcs. – art. no. C-4-24  
Dinner fork – art. no. 13205  
Dinner spoon – art. no. 13105  
Dinner knife – art. no. 30505  
Coffe-/tea spoon – art. no. 14505  
Dessertspoon – art. no. 11105  
Dessert fork – art. no. 11205



Chaco sauce ladle  
Design: Tias Eckhoff  
art. no. 14305



NEW

Pure Black knife set  
paring knife, santoku knife,  
chef's knife, and bread knife  
Design: HolmbäckNordentoft  
art. no. 380



Pure Black  
boning knife / carving knife  
Design: HolmbäckNordentoft  
art. no. x-120-6 / x-120-8



Trigono  
bread knife / santoku knife / boning knife  
Design: Simon Kalmer  
art. no. 350 / 352 / 353



l:cons



To Go Click – steel  
vacuum insulated cup  
Design: Ring  
0.2 l. – art. no. 675  
0.4 l. – art. no. 685



To Go Click – black  
vacuum insulated cup  
Design: Ring  
0.2 l. – art. no. 675-1  
0.4 l. – art. no. 685-1



To Go Click – chalk  
vacuum insulated cup  
Design: Ring  
0.2 l. – art. no. 675-3  
0.4 l. – art. no. 685-3



To Go Click – soft light grey  
vacuum insulated cup  
Design: Ring  
0.2 l. – art. no. 675-13  
0.4 l. – art. no. 685-13



To Go Click – black metallic  
vacuum insulated cup  
Design: Ring  
0.2 l. – art. no. 675-16  
0.4 l. – art. no. 685-16



To Go Click – blue metallic  
vacuum insulated cup  
Design: Ring  
0.2 l. – art. no. 675-18  
0.4 l. – art. no. 685-18



To Go Click – soft dark forest  
vacuum insulated cup  
Design: Ring  
0.2 l. – art. no. 675-26\*  
0.4 l. – art. no. 685-26\*

NEW



To Go Click – soft cloud  
vacuum insulated cup  
Design: Ring  
0.2 l. – art. no. 675-27  
0.4 l. – art. no. 685-27



To Go Click – soft rose  
vacuum insulated cup  
Design: Ring  
0.2 l. – art. no. 675-36  
0.4 l. – art. no. 685-36



To Go Click – soft mellow yellow  
vacuum insulated cup  
Design: Ring  
0.2 l. – art. no. 675-46\*  
0.4 l. – art. no. 685-46\*



To Go Click – soft laevis  
vacuum insulated cup  
Design: Ring  
0.2 l. – art. no. 675-49\*  
0.4 l. – art. no. 685-49\*



To Go Click – soft heather  
vacuum insulated cup  
Design: Ring  
0.2 l. – art. no. 675-50\*  
0.4 l. – art. no. 685-50\*



To Go Sip – soft laevis  
vacuum insulated cup with straw  
Design: Ring  
0.4 l. – art. no. 686-49\*



To Go Sip – soft heather  
vacuum insulated cup with straw  
Design: Ring  
0.4 l. – art. no. 686-50



To Go Sip – soft black  
vacuum insulated cup with straw  
Design: Ring  
0.4 l. – art. no. 686-51



NEW

Keep Cool vacuum insulated bottle 0.6 l.  
Design: Debiassi & Sandri  
art. nr. 355-3 (black) / 355-13 (light grey) / 355-14 (soft rose) / 355-15 (steel) / 355-21\* (mellow yellow)  
355-23\* (minty moss) / 355-24\* (laevis) / 355-25\* (heather) / 355-26 (dark forest)



Keep Warm vacuum insulated bottle 0.75 l.  
Design: Debiassi & Sandri  
art. nr. 366 (black) / 366-1 (light grey)

\*limited

l:cons



Tabi  
vacuum insulated bottle 1 l.  
steel  
Design: Kazushige Miyake  
art. no. 373-3



Tabi  
vacuum insulated bottle 1 l.  
dusty green  
Design: Kazushige Miyake  
art. no. 373-4



Tabi  
vacuum insulated bottle 1 l.  
black  
Design: Kazushige Miyake  
art. no. 373



Tabi  
vacuum insulated bottle 0.55 l.  
steel  
Design: Kazushige Miyake  
art. no. 372-3



Tabi  
vacuum insulated bottle 0.55 l.  
dusty green  
Design: Kazushige Miyake  
art. no. 372-4



Tabi  
vacuum insulated bottle 0.55 l.  
black  
Design: Kazushige Miyake  
art. no. 372



Tabi  
vacuum insulated bottle 0.55 l.  
soft ice blue  
Design: Kazushige Miyake  
art. no. 372-1



Tabi  
vacuum insulated bottle 0.55 l.  
dusty rose  
Design: Kazushige Miyake  
art. no. 372-2



Tabi  
vacuum insulated cup 0.4 l.  
black  
Design: Kazushige Miyake  
art. no. 370



Tabi  
vacuum insulated cup 0.4 l.  
soft ice blue  
Design: Kazushige Miyake  
art. no. 370-1



Tabi  
vacuum insulated cup 0.4 l.  
dusty rose  
Design: Kazushige Miyake  
art. no. 370-2



Carrie  
vacuum insulated bottle 0.5 l.  
black  
Design: Stelton  
art. no. 360



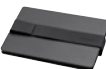
Carrie  
vacuum insulated bottle 0.5 l.  
light grey  
Design: Stelton  
art. no. 360-1



Carrie  
vacuum insulated bottle 0.5 l.  
rose  
Design: Stelton  
art. no. 360-2



Flap tablet-holder  
Design: Jørgen Fenger  
art. no. x-1



Companion cardholder  
Design: Søren Refsgaard  
art. no. 233



NEW

Journey ice scraper  
Design: Søren Refsgaard  
art. no. 234



NEW

Journey keychain  
Design: Søren Refsgaard  
art. no. 235



Stelton x Moomin



2025 marks 80 years of Moomin stories – The central theme of the anniversary year is the Moominhouse and what it stands for – a sense of belonging, a place where the door is always open. Every character is welcomed as they are and accepted for who they are. The Moomin stories are universal and timeless tales about belonging and inclusion.

In 2025, we will celebrate these wonderful stories with special 80th anniversary editions of To Go Click, where the Moomin 80 anniversary logo has been integrated into the graphics.

Stelton x Moomin



Stelton x Moomin – Moomin Lemonade vacuum insulated cup 0.2 l. – art. no. 1370-16\*



Stelton x Moomin – Moomin Love vacuum insulated cup 0.2 l. – art. no. 1370-15\*



Stelton x Moomin – Moominmamma's Tea party vacuum insulated cup 0.2 l. – art. no. 1370-14\*



Stelton x Moomin – Moomin Home vacuum insulated cup 0.2 l. – art. no. 1370-17\*



Stelton x Moomin – Moomin Knitting vacuum insulated cup 0.2 l. – art. no. 1370-11\*



Stelton x Moomin – Moomin Shooting star vacuum insulated cup 0.2 l. – art. no. 1370-13\*



Stelton x Moomin – Moomin Camping drinking bottle 0.75 l. – art. no. 1372-8\* vacuum insulated cup 0.2 l. – art. no. 1370-8\* vacuum insulated cup 0.4 l. – art. no. 1371-8\*



Stelton x Moomin – Moomin Frost drinking bottle 0.75 l. – art. no. 1372-6\* vacuum insulated cup 0.2 l. – art. no. 1370-6\* vacuum insulated cup 0.4 l. – art. no. 1371-6\*



Stelton x Moomin – Moomin Present drinking bottle 0.75 l. – art. no. 1372-9\* vacuum insulated cup 0.2 l. – art. no. 1370-9\* vacuum insulated cup 0.4 l. – art. no. 1371-9\*



Stelton x Moomin – Moomin black drinking bottle 0.75 l. – art. no. 1372-5\*



Stelton x Moomin – dusty drinking bottle 0.75 l. – art. no. 1372-3\*



Stelton x Moomin – soft sky drinking bottle 0.75 l. – art. no. 1372-7\*



Stelton x Moomin – sky Carrie vacuum insulated mug 0.4 l. art. no. 1375-7\* vacuum insulated drinking bottle 0.5 l. art. no. 1374-7\*

\*limited



# stelton

[www.stelton.com](http://www.stelton.com)



@steltondesign



@steltondesign



@steltondesign